

# PRODUCT BROCHURE

*Simply Exceptional Quality*

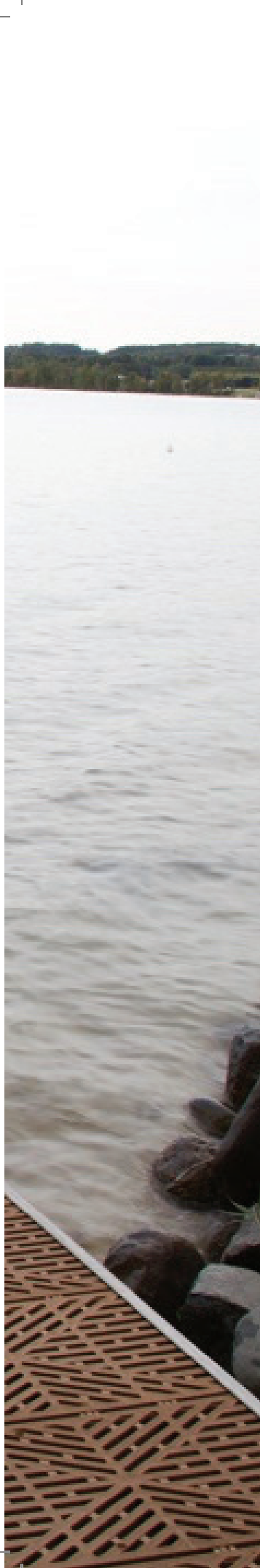
Twin Bay docks are truly Michigan made. They are easy to install, stronger by design and built to last.



2024







# Table of Contents

Modular Docking Systems .....	7
Patio Options .....	15
Dock Legs .....	19
Accessories .....	23
Dock Components .....	31



ABOUT TWIN BAY DOCKS





## Raising the Bar on Waterfront Living

Twin Bay Docks has been manufacturing quality-built docks and accessories for more than 30 years. Our long time employees take pride in their work. The aluminum frame features three full length stringers that provide extra strength and stability. The vinyl decking features a beautiful diamond pattern, flow through design that minimizes the effects of the wind and waves. The vinyl and the virtual wood are UV protected, have a slip resistant surface that is kind on your feet and is cool to the touch, even on the hottest days. Our dock system can be designed to fit your lifestyle and enhance your waterfront experience. From kayak racks, flag poles and bumpers, to steps, ladders and benches, our accessories enhance the look and functionality of your dock. Create the waterfront space that is comfortable for you with a dock that will last for generations









# Modular Docking Systems

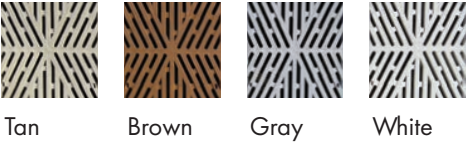
# Flow Through Diamond Decking

This vinyl decking features a beautiful diamond pattern, flow through design that minimizes the effects of the wind and waves. This dock system can be designed to fit your lifestyle and enhance your waterfront experiences.

**AVAILABLE IN:**

- 3', 40", 4', 5' wide
- \*Custom Sizes available
- \*Approximately 130 lbs per standard 10' section

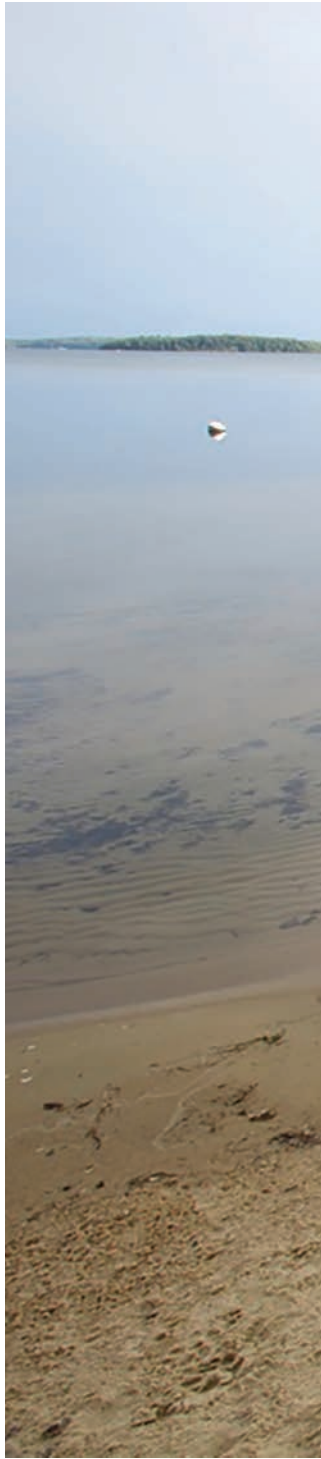
**COLOR OPTIONS:**



**FEATURES:**

- UV protected, fade-resistant
- Slip-resistant surface
- Warp-resistant
- Heat-resistant, remains cool
- Exclusive Diamond Pattern

- Green (Michigan State)
- Blue & Yellow (Michigan)
- \*Pictured below







## Solid Surface Decking

**Cedar Dock:** This lumber is naturally resistant to rot and decay without any treatment. It ages to a natural silver-gray color when left unfinished outdoors.

**Virtual Wood Vinyl:** Our virtual wood is a solid surface decking that has all the great qualities of our flow through. It is a slip resistant surface, does not get hot in the sun and looks great!

### FEATURES: CEDAR

Durable: Can last for decades  
Light in weight  
Uniformly textured

### AVAILABLE IN:

3', 40", 4' wide  
*\*Approximately 130 lbs per standard 10' section*

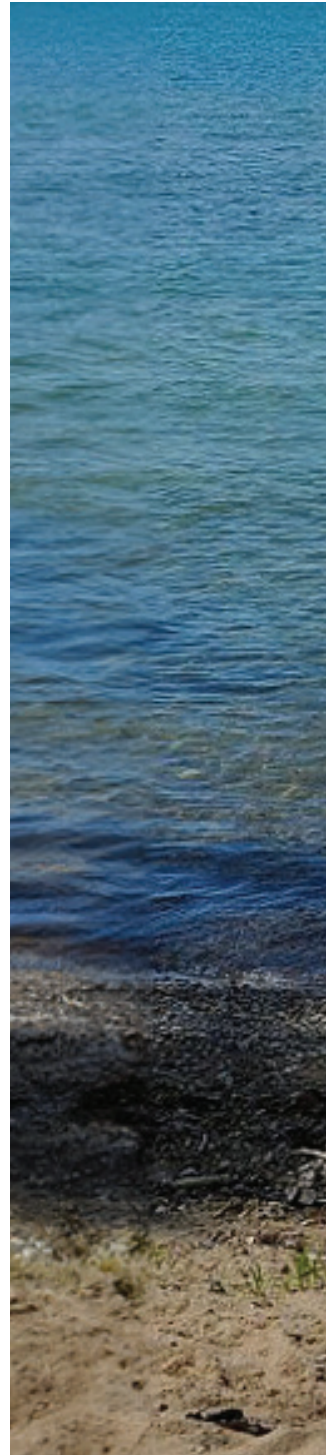
### FEATURES: VIRTUAL WOOD

UV protected, fade-resistant  
Slip-resistant surface  
Warp-resistant  
Heat-resistant, remains cool  
Stylish and easy on your feet

### FINISH OPTIONS:



Cedar      Virtual wood











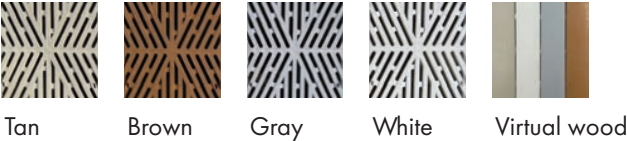
# Rolling Dock

This dock features all terrain dock wheels, lightweight aluminum frames and your choice of our virtual wood or flow through vinyl decking.

**AVAILABLE IN:**

- Flow Through Vinyl
- Virtual Wood Vinyl
- \*Priced per linear foot*

**COLOR/FINISH OPTIONS:**



**SECTION INCLUDES:**

- Wheel kit
- Diagonal bracing
- (1) Pair of sleeves

- Green (Michigan State)
- Blue & Yellow (Michigan)
- \*See page 8 for reference*





## Floating Dock

Floating docks are ideal for shorelines with deep or fluctuating water levels. They feature a platform supported by a buoyant float.

### AVAILABLE IN:

Flow Through Vinyl  
Virtual Wood Vinyl

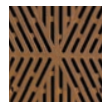
### SECTION INCLUDES:

- (2) 12' Poles
  - (2) Brackets
  - (1) Pair of sleeves
  - (1) 12" x 48" x 96" Float
- \*Sections sold individually*

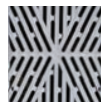
### COLOR OPTIONS:



Tan



Brown



Gray



White



Virtual wood

Green (Michigan State)

Blue & Yellow (Michigan)

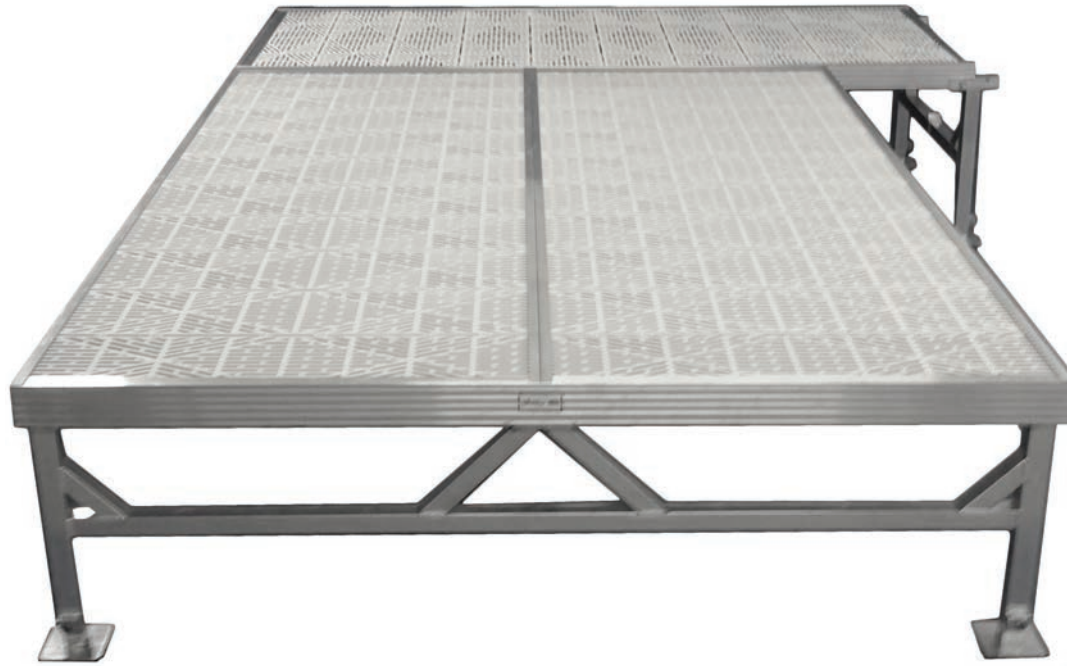
*\*See page 8 for reference*







## Patio Options



## 8 Ft Patio

Customizable dock sections allow you to create the perfect waterfront entertainment space. Patios available in all our decking options and are available in many sizes: 8', 12', 16', 20', 24'.

### AVAILABLE IN:

All Decking Options

### INCLUDES:

- (2) 4' x 10' Dock Sections
- (1) 8' Patio Leg
- (1) Pair of Angle Support Brackets
- (1) Side Rail Support Bracket
- (1) 8' End Cap
- (1) 4' End Cap

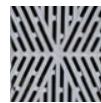
### COLOR/FINISH OPTIONS:



Tan



Brown



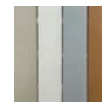
Gray



White



Cedar



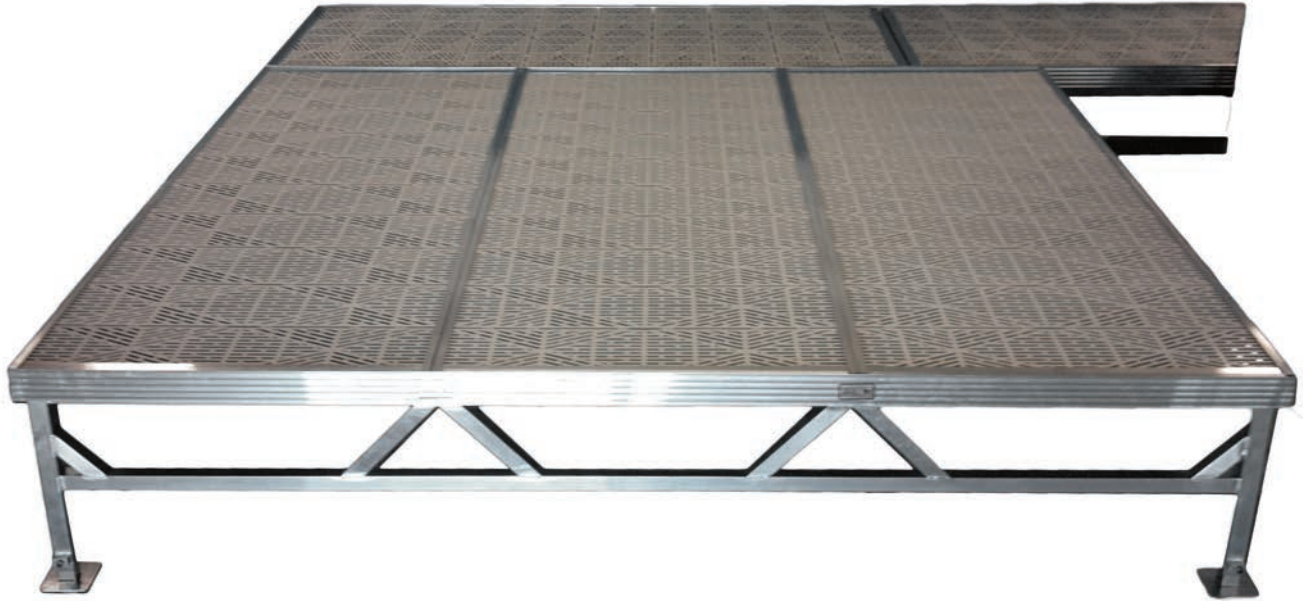
Virtual wood

Green (Michigan State)

Blue & Yellow (Michigan)

\*See page 8 for reference





## 12 Ft Patio

Customizable dock sections allow you to create the perfect waterfront entertainment space. Patios available in all our decking options and are available in many sizes: 8', 12', 16', 20', 24'.

### AVAILABLE IN:

All Decking Options

### INCLUDES:

- (3) 4' x 10' Dock Sections
- (2) 12' Patio Leg
- (1) Pair of Angle Support Brackets
- (2) Side Rail Support Bracket
- (1) 12' End Cap
- (1) 4' End Cap

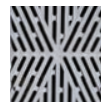
### COLOR/FINISH OPTIONS:



Tan



Brown



Gray



White



Cedar



Virtual wood

Green (Michigan State)

Blue & Yellow (Michigan)

\*See page 8 for reference



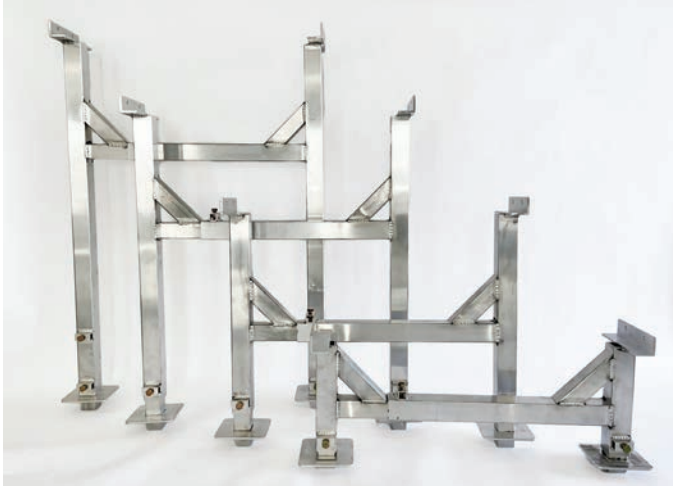




## Dock Legs



## DOCK LEGS



### Adjustable Dock Legs

#### AVAILABLE HEIGHTS:

- 12" – 18"
- 24" – 48"
- 36" – 72"
- 48" – 96"



### Leg Inserts

#### AVAILABLE SIZES:

- 2' Pair
- 3' Pair
- 4' Pair
- 5' Pair
- 6' Pair



### Patio Dock Legs

#### AVAILABLE SIZES:

- |               |               |               |
|---------------|---------------|---------------|
| 2' x 4' x 8'  | 3' x 6' x 12' | 4' x 8' x 16' |
| 2' x 4' x 12' | 3' x 6' x 16' | 4' x 8' x 20' |
| 2' x 4' x 16' | 3' x 6' x 20' | 4' x 8' x 24' |
| 2' x 4' x 20' | 3' x 6' x 24' |               |
| 2' x 4' x 24' | 4' x 8' x 8'  |               |
| 3' x 6' x 8'  | 4' x 8' x 12' |               |









# Accessories





## Stairs With Handrails

34"W, Aluminum with adjustable height

### AVAILABLE SIZES:

- 4 Step (27" – 51")
- 6 Step (41" – 65")
- 7 Step (50" – 70")
- 8 Step (58" – 78")
- 9 Step (66" – 86")
- 10 Step (74" – 94")



## Dock Ladder

16"W, Adjustable legs up to 2'

### AVAILABLE SIZES:

- 3 Step Ladder – 3'
- 4 Step Ladder – 4'
- 5 Step Ladder – 5'
- 6 Step Ladder – 6'



## Benches

### SPECIFICATIONS:

48"W x 16"D x 36"H  
25 lbs

### AVAILABLE COLORS:

Gray, Tan, Brown, White



## Freestanding Kayak/ Canoe Rack

Extendable rack with adjustable legs and arms. Holds up to 4 kayaks or 3 kayaks/1 canoe

### SPECIFICATIONS:

8' (max) W x 2.5'H  
58 lbs



## Freestanding Kayak/SUP Board Rack

Extendable rack with adjustable legs and arms. Holds 3 kayaks plus 2 SUP boards

### SPECIFICATIONS:

8' (max) W x 2.5'H  
60 lbs



## Dock Mounted Kayak Rack

Holds 1 kayak

### SPECIFICATIONS:

5 lbs





## Dock Mounted SUP Board Rack

Holds 1 SUP board

SPECIFICATIONS:

4 lbs



## Dock Mounted Double SUP Board Rack

Holds 2 SUP board

SPECIFICATIONS:

8 lbs



## Bird Deterrent

Attaches to dock.

SPECIFICATIONS:

23.5"H

AVAILABLE COLORS:

Gray, Glow in the Dark



## Bird Deterrent Yard Stake

**SPECIFICATIONS:**

25.25"H

**AVAILABLE COLORS:**

Gray, Glow in the Dark



## Telescoping Flag Pole Kit

**SPECIFICATIONS:**

Comes with gold ball top and American flag  
Easy Extension up to 20' in seconds  
Double harness allows for two flags  
Maintenance free, rust-proof, aircraft quality  
5 year limited warranty



## Handrails

**SIZES AVAILABLE:**

4' handrail, includes 2 brackets  
8' handrail, includes 2 brackets  
10' handrails, includes 2 brackets



## Round Bumpers

Slide Over Pipe And Bracket, Marine-Grade PVC Vinyl Anti-Fungal

**SPECIFICATIONS:**

18" x 3 1/4" Post Bumper, 2 1/4" ID

**AVAILABLE COLORS:**

White, Gray



## Small Corner Bumpers

1" Heavy Duty Lip For Fastening To Dock, Marine-Grade PVC

**SPECIFICATIONS:**

10" x 10" x 3 3/4"

**AVAILABLE COLORS:**

White, Gray



## Large Corner Bumpers

Lower Lip Corner Wraps Around 4 1/2" Docks, Fastens To Dock, Marine-Grade PVC.

**AVAILABLE COLORS:**

White, Gray





## 3' Side Bumper

Opening On Back Wraps Around Dock Rail

SPECIFICATIONS:

5 1/2" W, 2" x 3 3/4"

AVAILABLE COLORS:

White, Gray



## 36" Vertical Bumper Mount

AVAILABLE BUMPER COLORS:

White, Gray



## Glow Cleats

SPECIFICATIONS:

8", Hardware included





# Dock Components



DOCK COMPONENTS



Side Rail Bracket



Angle Support Brackets

Left + Right with  
3/8"-16 x 2-3/4"  
Stainless Steel  
Carriage Bolts



Starter Section  
Brackets



Floating Dock Starter  
Brackets



Pole Bracket



Pole Clamp



Cross Arm Clamp

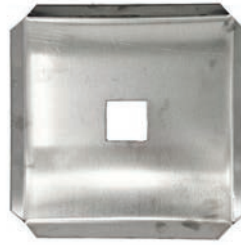


Stringer Bracket with  
U-Clamp

DOCK COMPONENTS



**Bottom Plate for Round Pole**



**Mud Pads**  
12" x 12"  
Comes in pairs



**Eye Anchor**  
50" Long Steel



**Diagonal Brace**



**Sleeves**  
Comes in pairs



**Quick Pins**  
5/16 in Pin .  
2 19/32 in  
Steel, Zinc Plated



**Knob Set**



**Auger**

## DOCK COMPONENTS



**Dock Jack**



**End Caps**

Available Sizes:  
40", 48", 96", 144"



**Wheel Assembly**

Wheels (pair) included



**Corner Section**

34" x 34" (48" longest side)  
Available In:  
White, Gray, Brown, Tan,  
Green, Blue, Yellow











## CONTACT US

**ADDRESS**

982 East Commerce Drive, Traverse City, MI 49685

**EMAIL**

info@twinbaydockproducts.com

**PHONE**

(231) 943-8420

**FAX**

(231) 943-9440

To locate a dealer visit our website at [www.twinbaydockproducts.com](http://www.twinbaydockproducts.com) or scan the QR code.